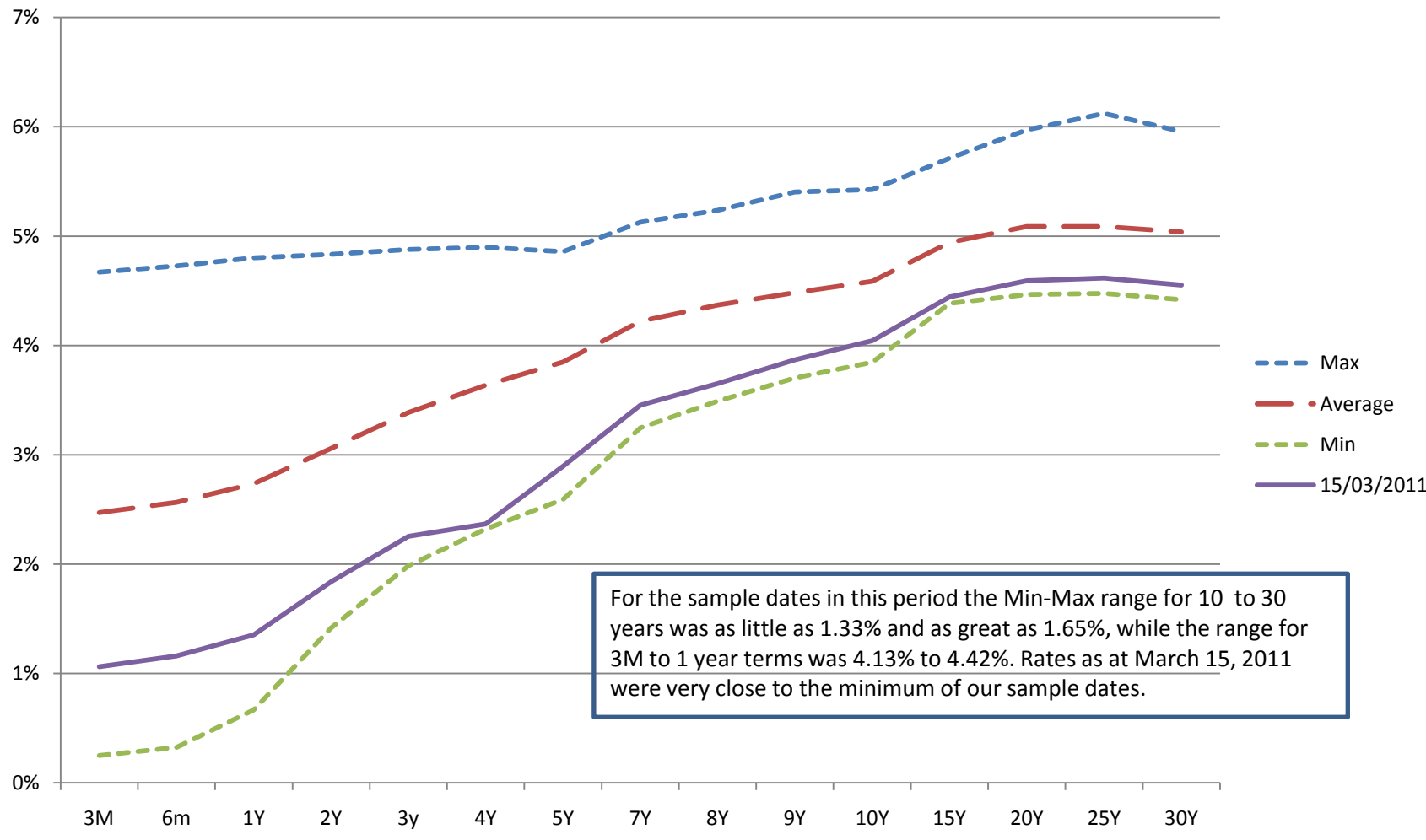
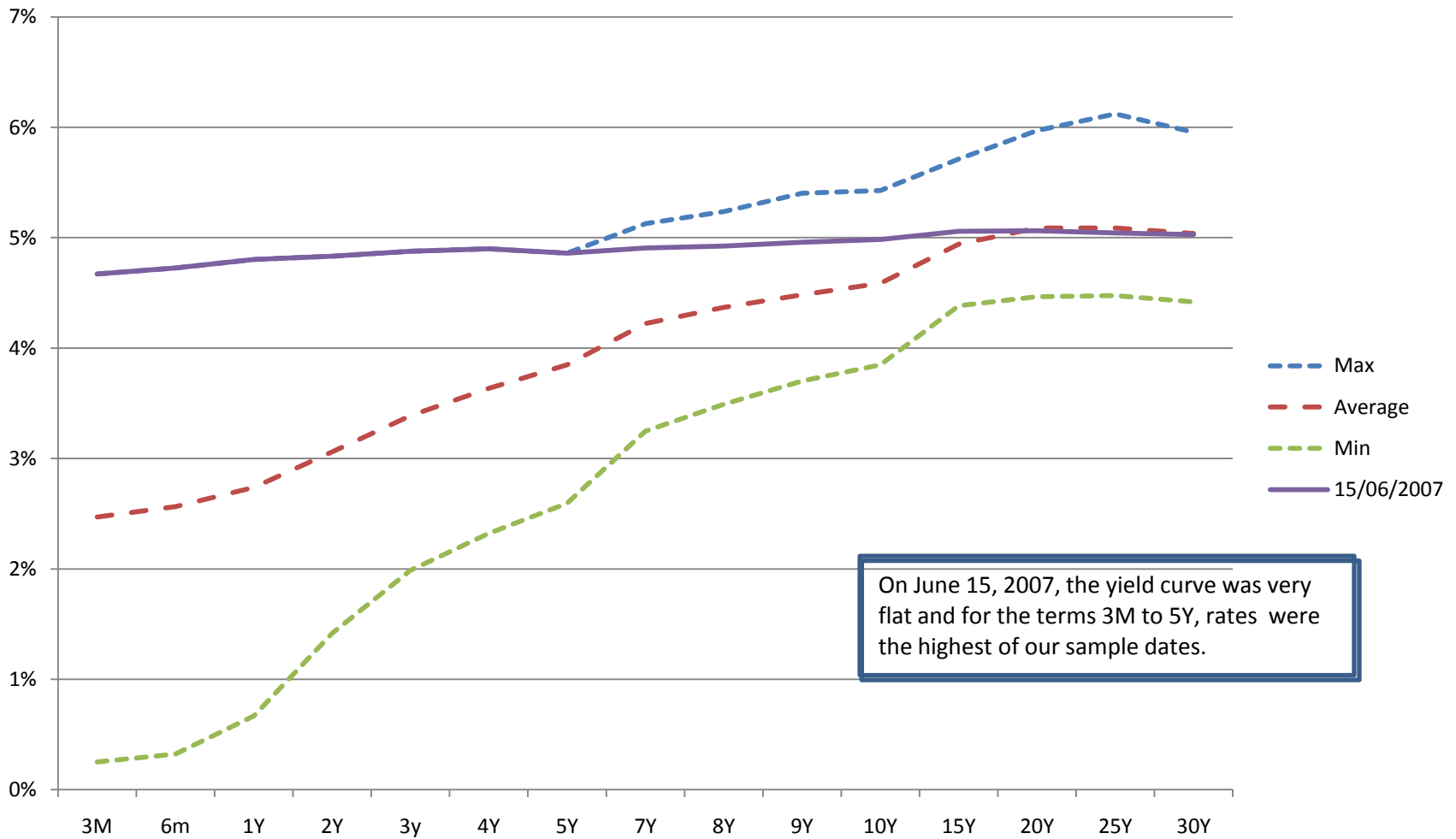


Bloomberg Manitoba Series F302, Quarterly, 12/15/2002 to 3/15/2011



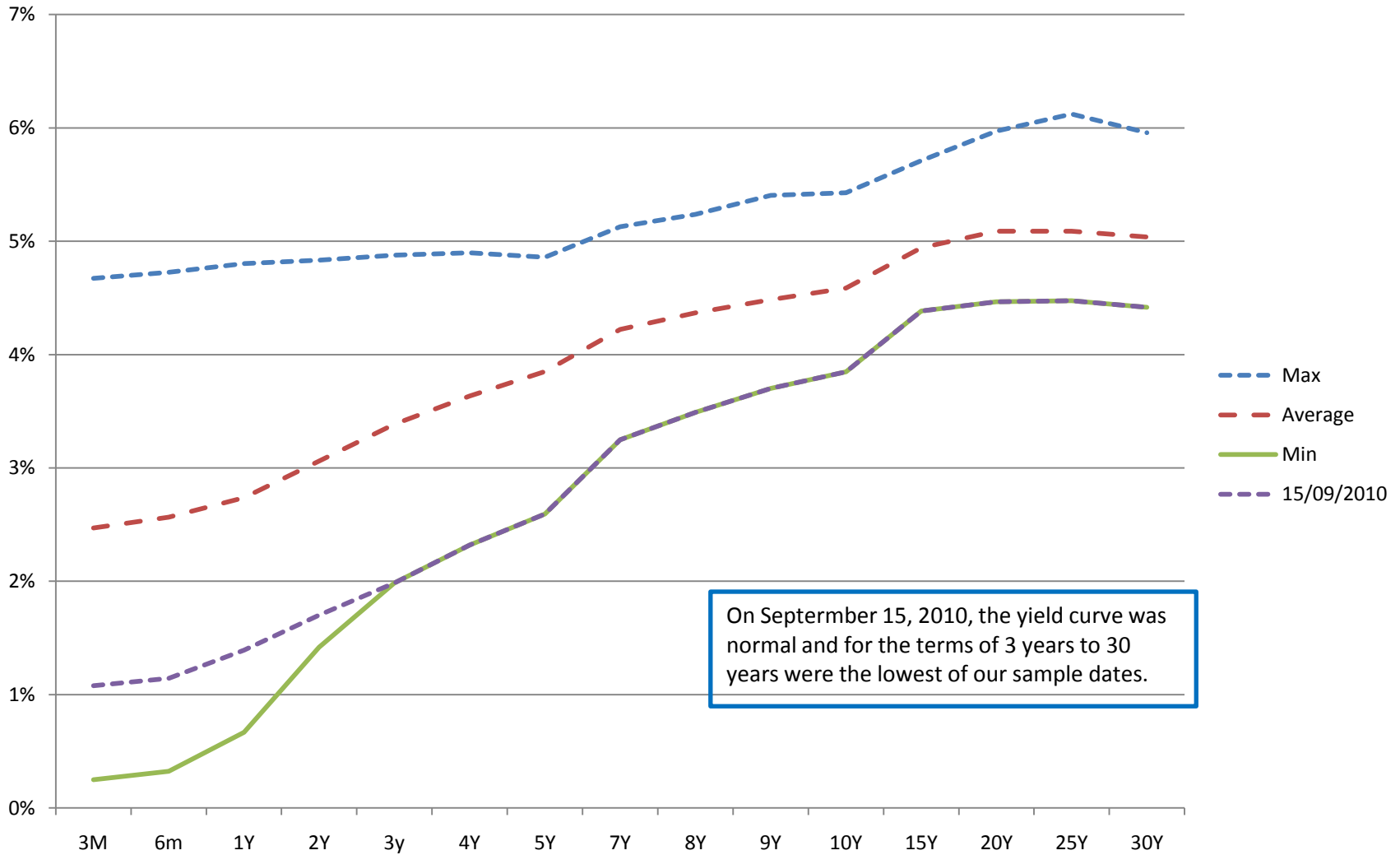
For the sample dates in this period the Min-Max range for 10 to 30 years was as little as 1.33% and as great as 1.65%, while the range for 3M to 1 year terms was 4.13% to 4.42%. Rates as at March 15, 2011 were very close to the minimum of our sample dates.

Bloomberg Manitoba Series F302, Quarterly, 12/15/2002 to 3/15/2011

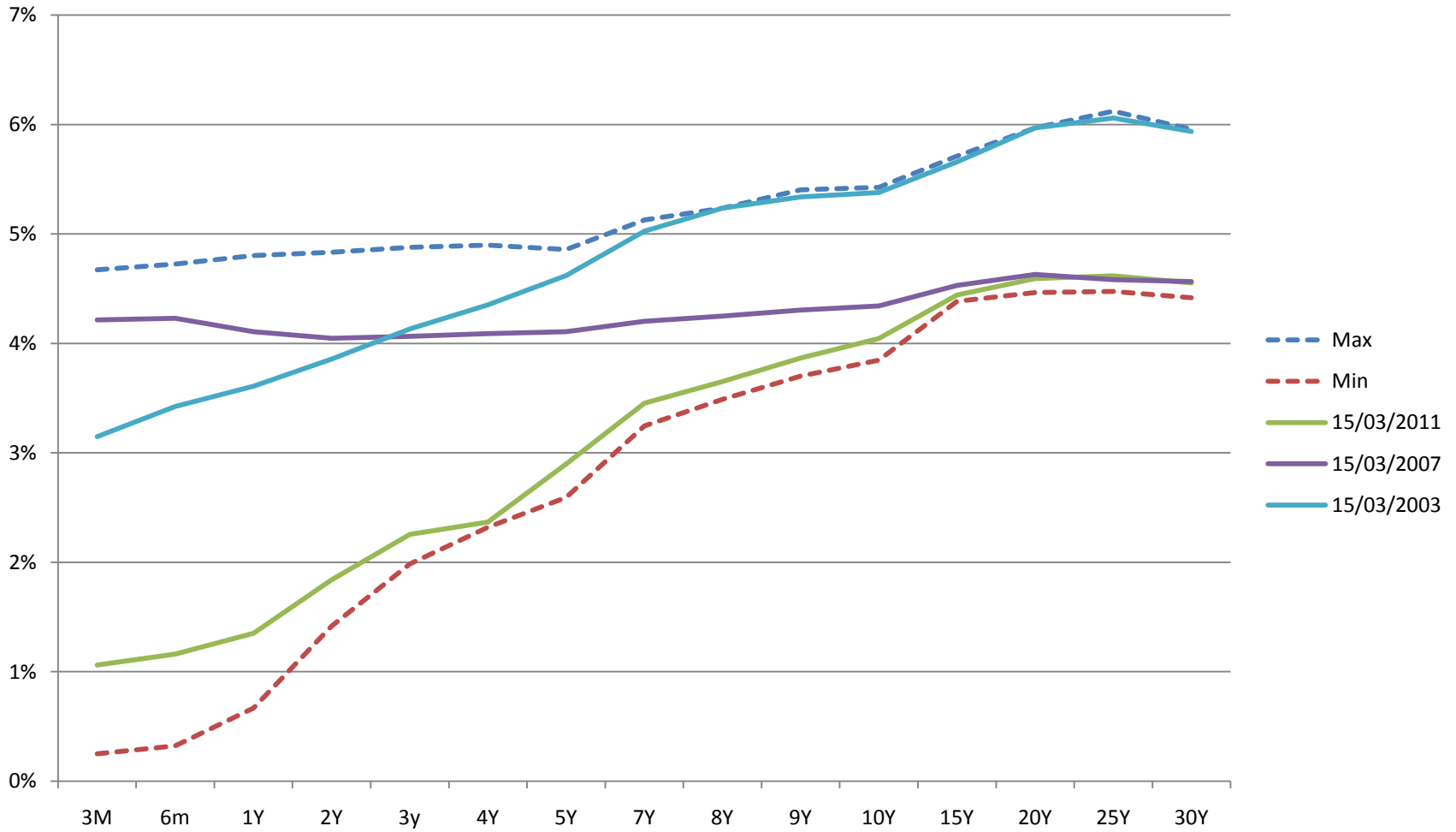


On June 15, 2007, the yield curve was very flat and for the terms 3M to 5Y, rates were the highest of our sample dates.

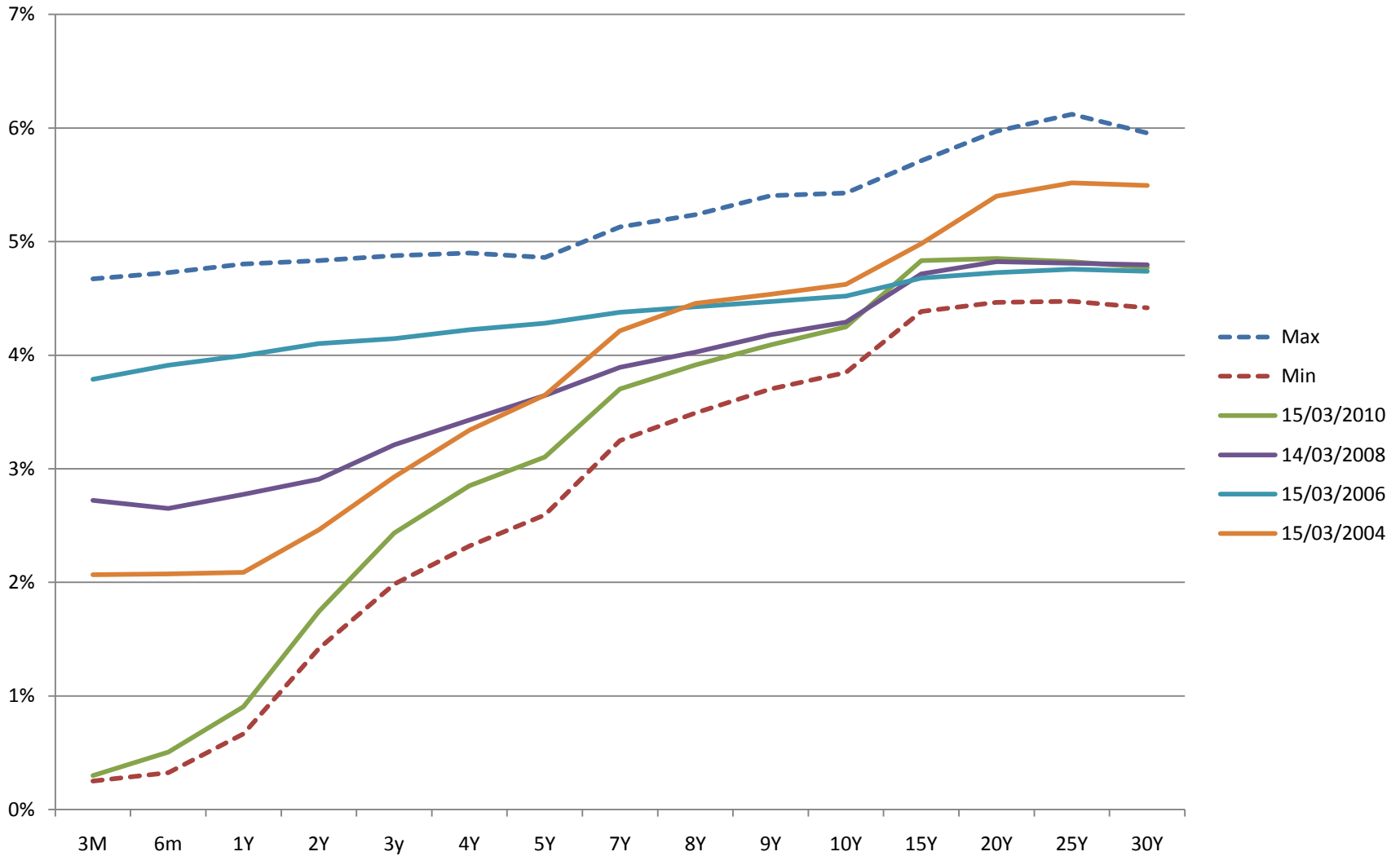
Bloomberg Manitoba Series F302, Quarterly, 12/15/2002 to 3/15/2011



Bloomberg Manitoba Series F302, Quarterly, 12/15/2002 to 3/15/2011



Bloomberg Manitoba Series F302, Quarterly, 12/15/2002 to 3/15/2011



F302	3M	6m	1Y	2Y	3y	4Y	5Y	7Y	8Y	9Y	10Y	15Y	20Y	25Y	30Y
Max	4.67%	4.73%	4.80%	4.83%	4.88%	4.90%	4.86%	5.13%	5.24%	5.40%	5.43%	5.71%	5.97%	6.12%	5.96%
Average	2.47%	2.57%	2.74%	3.06%	3.39%	3.64%	3.85%	4.22%	4.37%	4.48%	4.59%	4.94%	5.09%	5.09%	5.04%
Min	0.25%	0.32%	0.67%	1.42%	1.99%	2.32%	2.59%	3.25%	3.49%	3.70%	3.85%	4.38%	4.47%	4.48%	4.42%
15/03/2011	1.06%	1.16%	1.35%	1.84%	2.26%	2.37%	2.90%	3.45%	3.65%	3.87%	4.04%	4.44%	4.59%	4.62%	4.55%
15/12/2010	1.07%	1.18%	1.44%	1.90%	2.27%	2.63%	2.94%	3.53%	3.78%	3.97%	4.07%	4.43%	4.59%	4.65%	4.57%
15/09/2010	1.08%	1.14%	1.39%	1.70%	1.99%	2.32%	2.59%	3.25%	3.49%	3.70%	3.85%	4.38%	4.47%	4.48%	4.42%
15/06/2010	0.83%	1.00%	1.41%	2.12%	2.74%	3.09%	3.36%	3.92%	4.07%	4.25%	4.34%	4.79%	4.82%	4.80%	4.76%
15/03/2010	0.30%	0.51%	0.91%	1.74%	2.43%	2.85%	3.10%	3.70%	3.91%	4.09%	4.25%	4.83%	4.85%	4.82%	4.77%
15/12/2009	0.30%	0.39%	0.69%	1.45%	2.17%	2.64%	2.96%	3.51%	3.79%	4.04%	4.28%	4.95%	4.99%	4.91%	4.80%
15/09/2009	0.25%	0.32%	0.67%	1.50%	2.21%	2.74%	3.03%	3.59%	3.84%	4.05%	4.26%	5.01%	5.00%	4.87%	4.78%
15/06/2009	0.35%	0.43%	0.74%	1.53%	2.43%	3.14%	3.44%	3.97%	4.18%	4.36%	4.55%	5.16%	5.18%	5.06%	4.96%
15/03/2009	0.53%	0.70%	0.91%	1.42%	2.12%	2.73%	3.09%	3.76%	4.16%	4.29%	4.59%	5.45%	5.51%	5.22%	5.12%
15/12/2008	1.25%	1.45%	1.77%	2.33%	2.73%	3.23%	3.59%	4.23%	4.46%	4.59%	4.79%	5.39%	5.53%	5.36%	5.25%
15/09/2008	2.75%	2.69%	2.69%	2.87%	3.27%	3.42%	3.63%	3.95%	4.09%	4.20%	4.34%	4.77%	4.84%	4.81%	4.75%
13/06/2008	3.12%	3.32%	3.58%	3.78%	3.98%	4.16%	4.27%	4.46%	4.54%	4.61%	4.72%	4.94%	5.03%	5.02%	4.97%
14/03/2008	2.72%	2.65%	2.77%	2.91%	3.21%	3.43%	3.64%	3.89%	4.03%	4.18%	4.29%	4.72%	4.82%	4.81%	4.80%
14/12/2007	4.15%	4.26%	4.33%	4.39%	4.44%	4.48%	4.51%	4.60%	4.64%	4.68%	4.72%	4.84%	4.88%	4.85%	4.83%
14/09/2007	4.28%	4.48%	4.56%	4.51%	4.52%	4.55%	4.58%	4.65%	4.69%	4.73%	4.75%	4.94%	5.01%	4.99%	4.98%
15/06/2007	4.67%	4.73%	4.80%	4.83%	4.88%	4.90%	4.86%	4.91%	4.92%	4.96%	4.98%	5.06%	5.06%	5.04%	5.03%
15/03/2007	4.22%	4.23%	4.11%	4.05%	4.07%	4.09%	4.11%	4.20%	4.25%	4.30%	4.34%	4.53%	4.63%	4.58%	4.57%
15/12/2006	4.15%	4.19%	4.16%	4.09%	4.07%	4.07%	4.09%	4.18%	4.25%	4.31%	4.36%	4.51%	4.57%	4.55%	4.54%
15/09/2006	4.20%	4.20%	4.20%	4.18%	4.17%	4.19%	4.20%	4.28%	4.33%	4.40%	4.44%	4.61%	4.69%	4.70%	4.69%
15/06/2006	4.33%	4.37%	4.43%	4.42%	4.45%	4.48%	4.51%	4.61%	4.65%	4.72%	4.77%	4.94%	4.98%	5.00%	4.98%
15/03/2006	3.79%	3.91%	4.00%	4.10%	4.15%	4.22%	4.28%	4.38%	4.43%	4.47%	4.52%	4.68%	4.73%	4.76%	4.74%
15/12/2005	3.58%	3.74%	3.94%	3.99%	4.02%	4.07%	4.12%	4.20%	4.24%	4.30%	4.34%	4.60%	4.64%	4.69%	4.66%
15/09/2005	2.81%	2.90%	3.03%	3.20%	3.32%	3.48%	3.63%	3.84%	3.93%	4.04%	4.13%	4.43%	4.63%	4.67%	4.65%
15/06/2005	2.51%	2.64%	2.76%	3.02%	3.22%	3.40%	3.64%	3.97%	4.07%	4.17%	4.26%	4.58%	4.83%	4.88%	4.85%
15/03/2005	2.49%	2.67%	2.91%	3.35%	3.62%	3.83%	4.09%	4.51%	4.58%	4.70%	4.79%	5.13%	5.31%	5.35%	5.32%
15/12/2004	2.46%	2.50%	2.62%	2.97%	3.32%	3.52%	3.80%	4.25%	4.34%	4.45%	4.56%	4.93%	5.24%	5.27%	5.24%
15/09/2004	2.38%	2.57%	2.90%	3.31%	3.72%	4.01%	4.28%	4.76%	4.85%	4.94%	5.02%	5.31%	5.58%	5.61%	5.60%
15/06/2004	2.06%	2.24%	2.79%	3.50%	3.99%	4.36%	4.66%	5.13%	5.23%	5.31%	5.40%	5.69%	5.89%	5.92%	5.87%
15/03/2004	2.07%	2.08%	2.09%	2.46%	2.93%	3.34%	3.65%	4.21%	4.45%	4.54%	4.62%	4.98%	5.40%	5.52%	5.49%
15/12/2003	2.59%	2.62%	2.73%	3.12%	3.63%	4.02%	4.30%	4.78%	4.96%	5.04%	5.10%	5.40%	5.70%	5.80%	5.77%
15/09/2003	2.60%	2.58%	2.80%	3.21%	3.63%	3.96%	4.28%	4.79%	4.99%	5.10%	5.20%	5.50%	5.83%	5.89%	5.84%
15/06/2003	3.20%	3.13%	2.95%	2.96%	3.15%	3.30%	3.60%	4.06%	4.27%	4.37%	4.45%	4.76%	5.23%	5.33%	5.27%
15/03/2003	3.15%	3.42%	3.61%	3.86%	4.13%	4.35%	4.62%	5.03%	5.24%	5.34%	5.38%	5.66%	5.97%	6.06%	5.94%
15/12/2002	2.71%	2.81%	3.01%	3.45%	3.91%	4.22%	4.54%	5.01%	5.23%	5.40%	5.43%	5.71%	5.97%	6.12%	5.96%

