

NEEDS FOR AND ALTERNATIVES TO (NFAT)**Manitoba Hydro Undertaking #32**

Manitoba Hydro to identify from the public record who, other than Manitoba Hydro, is importing into the MISO region and the volumes of those imports.

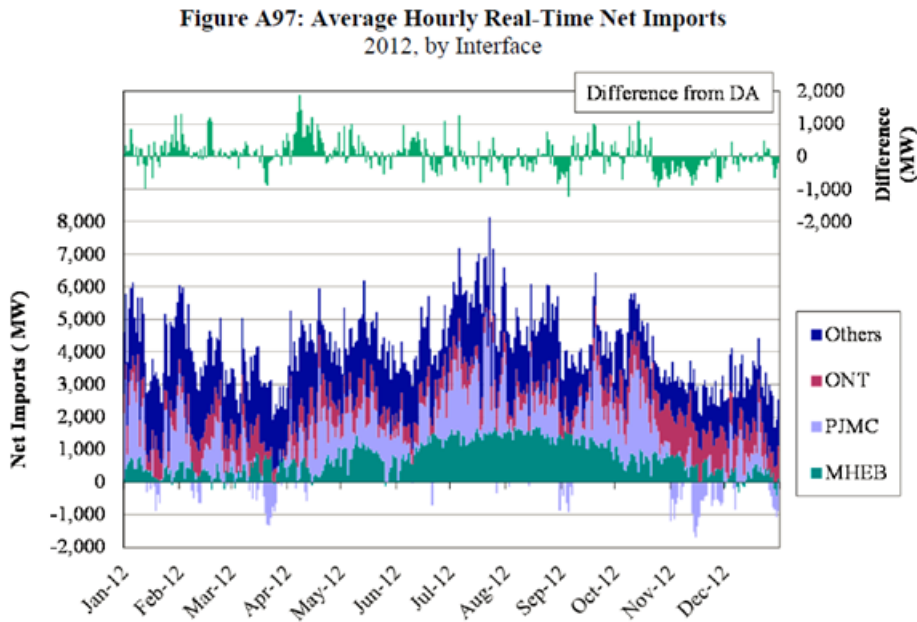
Response:

The following graphics summarize real time monthly imports into the MISO by key interfaces for 2011 and 2012.

These graphics are taken directly from the 2012 and 2011 MISO IMM Reports respectively, and provide the magnitude of imports into MISO by key regions. (Manitoba – MHEB, Ontario – ONT, PJM ISO – PJMC).

Hourly net imports into MISO can range from 1000 MW up to 8000 MW depending on MISO load, pricing conditions and available transmission. The majority of imports come from the adjacent (east) PJM ISO region, with Manitoba and Ontario also providing significant regional imports into MISO.

MISO Imports by Key Regions – 2012 MISO IMM Report page A-131.



MISO Imports by Key Regions – 2011 MISO IMM Report page A-108.

