

MANITOBA ) Order No. 91/15  
)  
THE PUBLIC UTILITIES BOARD ACT )  
)  
MANITOBA HYDRO ACT )  
)  
THE CROWN CORPORATIONS PUBLIC )  
REVIEW AND ACCOUNTABILITY ACT ) September 23, 2015

BEFORE: Régis Gosselin, B ès Arts, MBA, CPA, CGA, Chair  
Marilyn Kapitany, B.Sc., (Hon), M.Sc., Member

AN APPLICATION BY MANITOBA HYDRO  
FOR INTERIM EX PARTE APPROVAL  
FOR THE WEEK OF SEPTEMBER 28, 2015 TO OCTOBER 4, 2015  
OF THE SURPLUS ENERGY PROGRAM RATE

## **Introduction**

By this Order, the Public Utilities Board (Board) approves Manitoba Hydro's (MH) September 22, 2015 application for *ex parte* approval of revised and interim Surplus Energy Program (SEP) rates for the week of September 28, 2015 to October 4, 2015 attached as "Schedule SEP-1". Appendices A, B, C and D depict historical average, peak, shoulder and off-peak SEP prices.

## **Background**

On October 25, 1999 Manitoba Hydro (MH) applied to the Public Utilities Board (Board) for the establishment of a Surplus Energy Program (SEP) that would be made available to MH's General Service customers on an interruptible basis.

Board Order 90/00 approved MH's Application for the SEP with SEP prices set based on a forecast of the expected source of SEP energy and such prices would be submitted weekly to the Board for approval on an *ex parte* basis. Board Order 111/12 extended SEP to March 31, 2014.

Board Order 43/13 approved options 2 and 3 of the Surplus Energy Program as permanent rate offerings. In that same order, option 1 remains approved on an interim basis.

The pricing of the SEP energy, which is surplus to Hydro's immediate requirements, is established to approximate the price offered by MH to export sales customers on the opportunity market or, in the case where MH expects to import power, at a price reflective of MH's cost with a 10% surcharge.

The SEP program is expected to "break-even" on an annual basis. This means that the revenue raised is expected to be approximately the same as if the power had been sold on the opportunity export market.

Under SEP, participating large Manitoba customers either accept or decline the available additional electricity, as offered at the rates approved by the Board. In accepting the excess power, customers accept the risk of adverse implications if a service interruption occurs. These customers are generally expected to have back-up generation to draw on if a service interruption occurs.

### **Board Findings**

MH's latest SEP application is in accordance with the Board approved methodology and the SEP program continues to have value for a small component of MH's larger customer base (those firms able to profitably access interruptible power).

Continuing to deal with SEP applications on an interim *ex parte* basis is consistent with past practice, and the rates set through this process are interim, to be finalized at General Rate Application hearings.

Accordingly, the Board affirms revised Schedule SEP-1 and will approve the attached schedule.

**IT IS THEREFORE ORDERED THAT:**

1. Manitoba Hydro's application for approval of Surplus Energy Rates from September 28, 2015 to October 4, 2015 as shown in Schedule SEP-1, as attached **BE AND IS HEREBY APPROVED** on an Interim Ex Parte basis.
2. This Interim Ex Parte Order shall be in full force and effect until confirmed or varied by a further Order of the Board following a public hearing.

THE PUBLIC UTILITIES BOARD

"Régis Gosselin, B ès Arts, MBA, CPA, CGA"

Chair

"Kurt Simonsen"

Acting Secretary

Certified a true copy of Order  
No. 91/15 issued by the  
Public Utilities Board



\_\_\_\_\_  
Acting Secretary

The estimated average spot market rate is \$23.98 per MWh. Manitoba Hydro warrants that the Spot Market Rate has been calculated using approved Public Utilities Board methodology. The expected source(s) of spot market energy is (are): export

SCHEDULE SEP-1

SURPLUS ENERGY PROGRAM RATES

September 28, 2015 to October 4, 2015

Tariff No. 50-19 General Service Medium (Utility Owned Trans.)

	Peak Hours	Shoulder Hours	Off Peak Hours	
Distribution Charge	0.620	0.620	0.620	cents/kWh
Energy Charge	3.485	2.857	1.421	cents/kWh

Tariff No. 50-20 General Service Large 750V not exceeding 30 kV

	Peak Hours	Shoulder Hours	Off Peak Hours	
Distribution Charge	0.330	0.330	0.330	cents/kWh
Energy Charge	3.438	2.819	1.403	cents/kWh

Tariff No. 50-21 General Service Large 30 kV not exceeding 100 kV

	Peak Hours	Shoulder Hours	Off Peak Hours	
Distribution Charge	0.140	0.140	0.140	cents/kWh
Energy Charge	3.356	2.751	1.369	cents/kWh

Tariff No. 50-22 General Service Large exceeding 100 kV

	Peak Hours	Shoulder Hours	Off Peak Hours	
Distribution Charge	0.060	0.060	0.060	cents/kWh
Energy Charge	3.306	2.710	1.349	cents/kWh

	May 1 to October 31	November 1 to April 30
<b>Peak Hours</b>	Monday - Friday * 12:01 - 20:00 Hours	Monday - Friday * 7:01-11:00 and 16:01-20:00 Hours
<b>Shoulder Hours</b>	Monday - Sunday ** 7:01 - 23:00 Hours	Monday - Sunday ** 7:01 - 23:00
<b>Off Peak Hours</b>	Monday - Sunday 23:01 - 7:00 Hours	Monday - Sunday 23:01 - 7:00 Hours

\* excluding statutory holidays  
 \*\* excluding peak hours

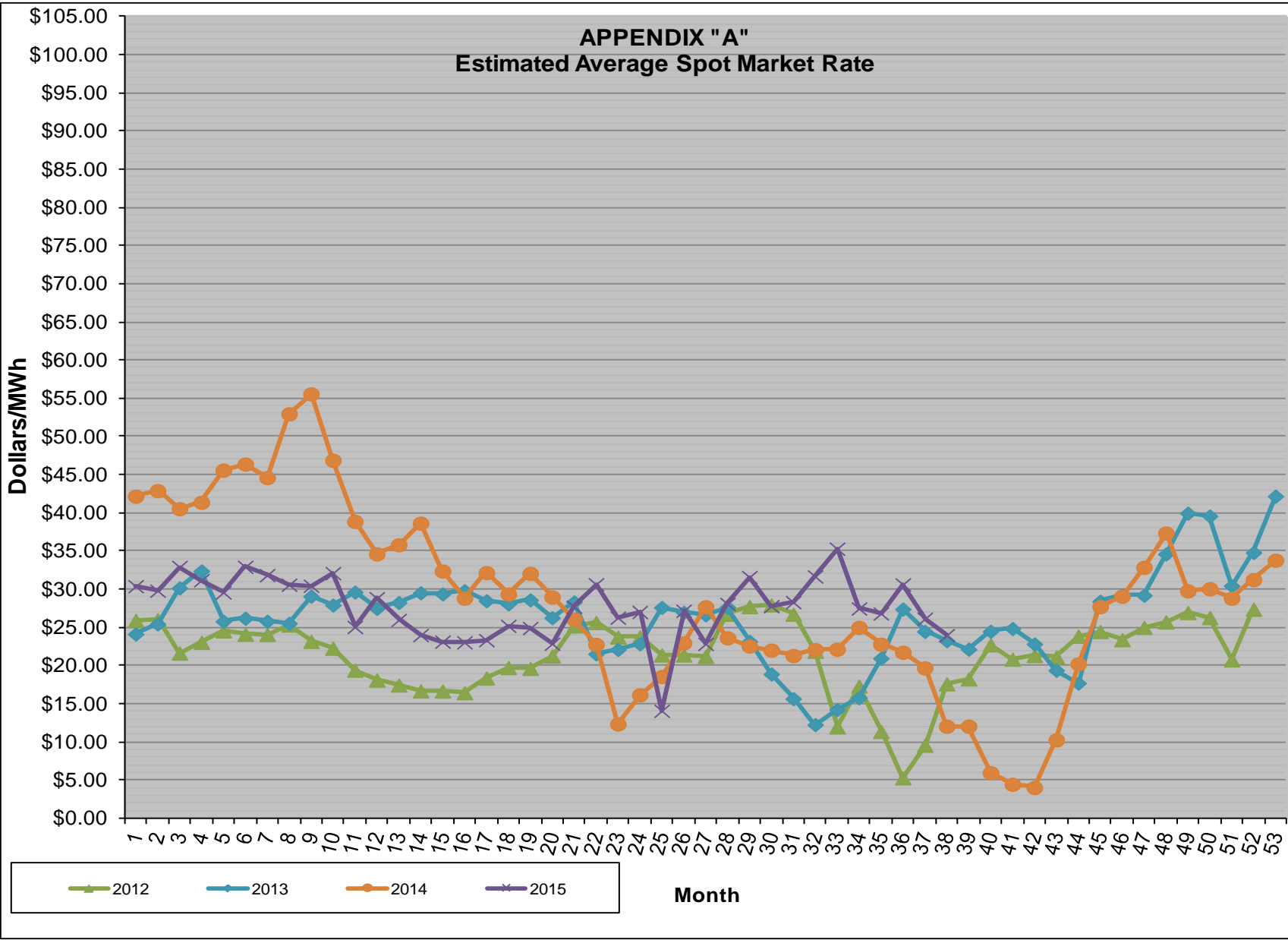
The Basic Monthly Charge is \$50.00 per month for SEP customers with total loads less than or equal to 1000 kVA.  
 The Basic Monthly Charge is \$100.00 per month for SEP customers with total loads greater than 1000 kVA.

Approved by:

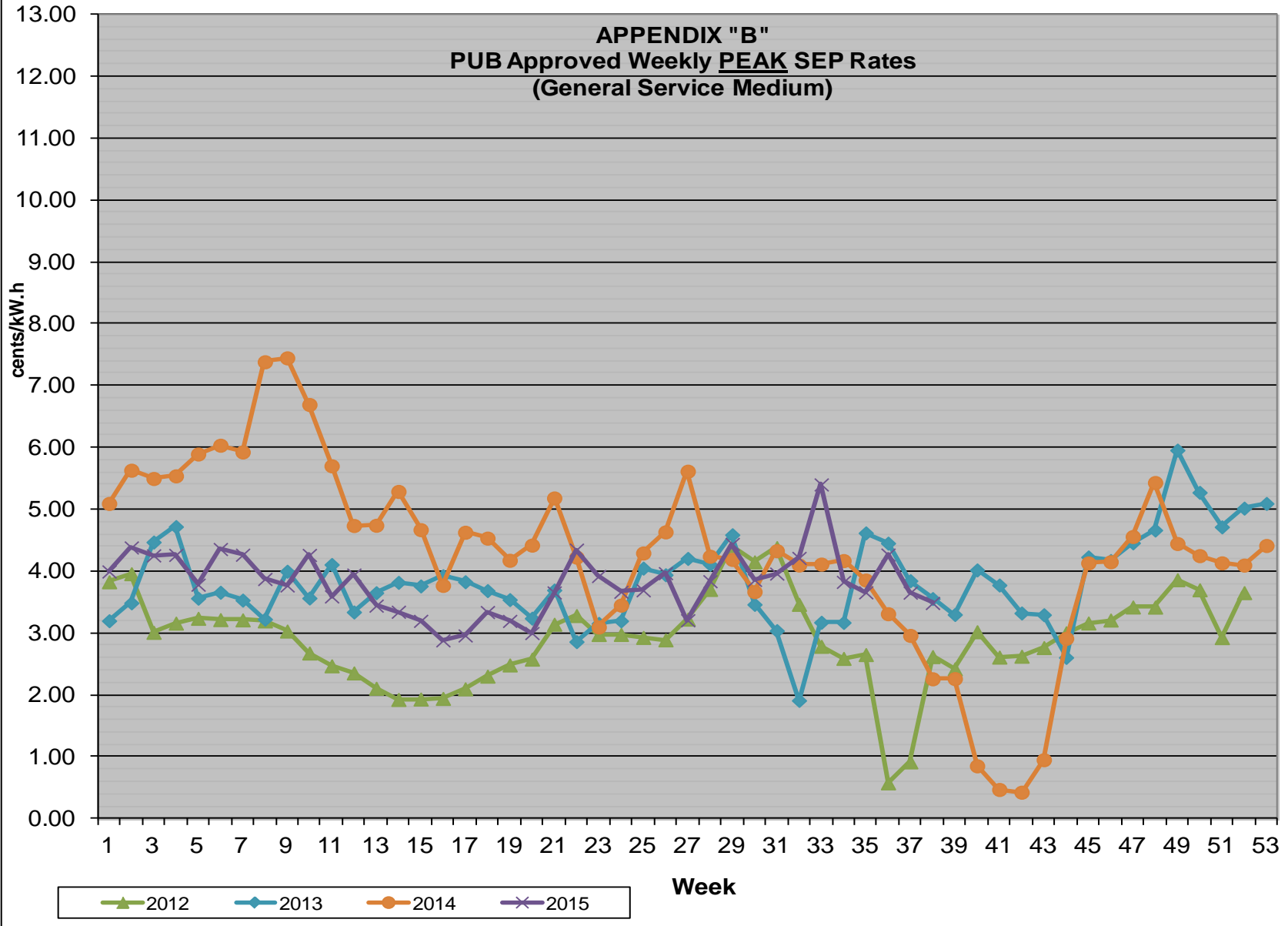
  
 Greg Barnlund  
 Division Manager  
 Rates & Regulatory Affairs

Manitoba Hydro  
 Hydraulic Operations Department  
 September 22, 2015 15:05

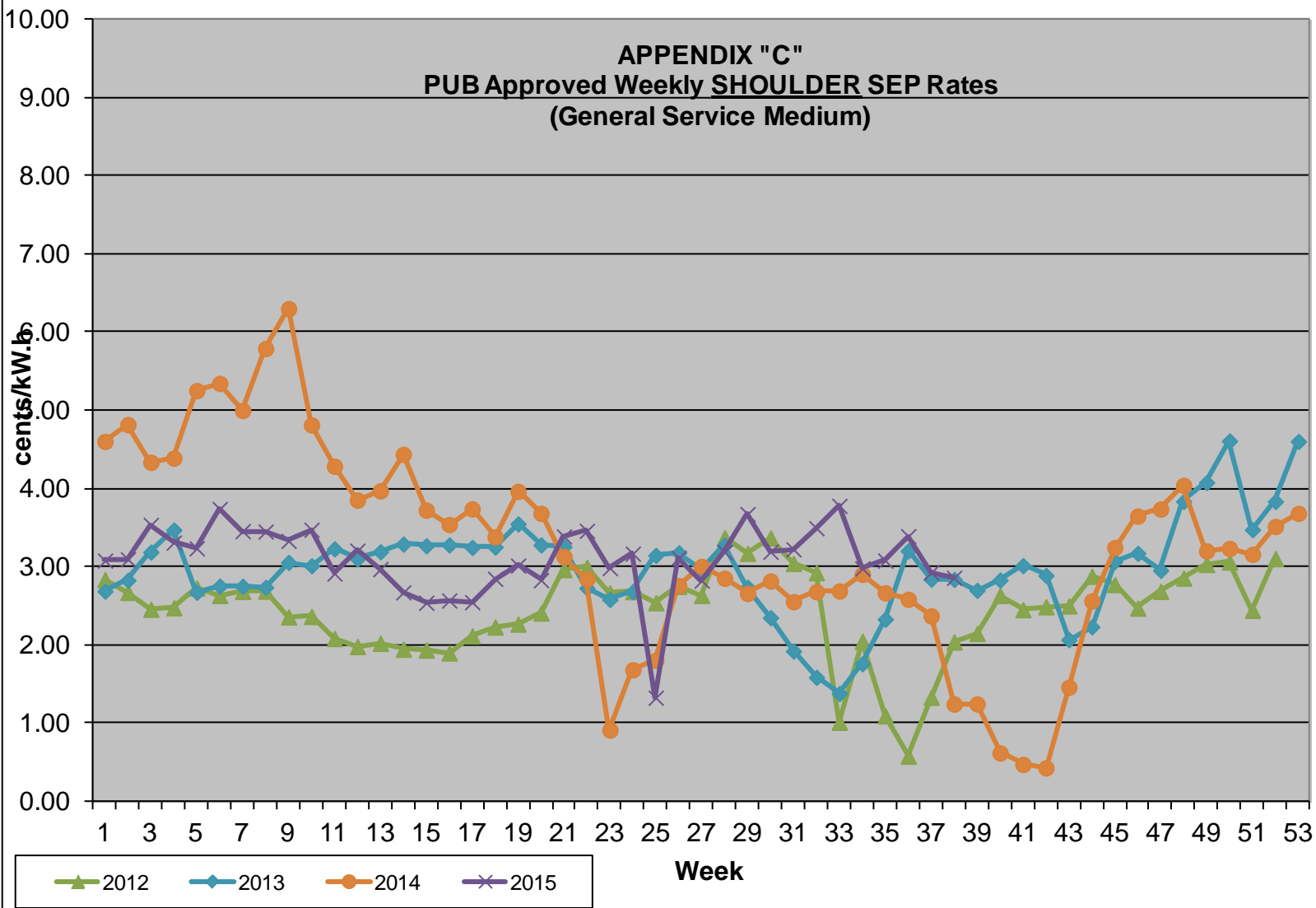
**APPENDIX "A"**  
**Estimated Average Spot Market Rate**



**APPENDIX "B"**  
**PUB Approved Weekly PEAK SEP Rates**  
**(General Service Medium)**



**APPENDIX "C"**  
**PUB Approved Weekly SHOULDER SEP Rates**  
**(General Service Medium)**





**APPENDIX "D"**  
**PUB Approved Weekly OFF-PEAK SEP Rates**  
**(General Service Medium)**

