

MANITOBA) Order No. 77/14
)
THE PUBLIC UTILITIES BOARD ACT)
)
MANITOBA HYDRO ACT)
)
THE CROWN CORPORATIONS PUBLIC)
REVIEW AND ACCOUNTABILITY ACT) July 9, 2014

BEFORE: Régis Gosselin, B ès Arts, MBA, CGA, Chair
Larry Soldier, Member

AN APPLICATION BY MANITOBA HYDRO
FOR INTERIM EX PARTE APPROVAL
FOR THE WEEK OF JULY 14 TO JULY 20, 2014
OF THE SURPLUS ENERGY PROGRAM RATE

Introduction

By this Order, the Public Utilities Board (Board) approves Manitoba Hydro's (MH) July 8, 2014 application for *ex parte* approval of revised and interim Surplus Energy Program (SEP) rates for the week of July 14 to July 20, 2014 attached as "Schedule SEP-1". Appendices A, B, C and D depict historical average, peak, shoulder and off-peak SEP prices.

Background

On October 25, 1999 Manitoba Hydro (MH) applied to the Public Utilities Board (Board) for the establishment of a Surplus Energy Program (SEP) that would be made available to MH's General Service customers on an interruptible basis.

Board Order 90/00 approved MH's Application for the SEP with SEP prices set based on a forecast of the expected source of SEP energy and such prices would be submitted weekly to the Board for approval on an *ex parte* basis. Board Order 111/12 extended SEP to March 31, 2014.

Board Order 43/13 approved options 2 and 3 of the Surplus Energy Program as permanent rate offerings. In that same order, option 1 remains approved on an interim basis.

The pricing of the SEP energy, which is surplus to Hydro's immediate requirements, is established to approximate the price offered by MH to export sales customers on the opportunity market or, in the case where MH expects to import power, at a price reflective of MH's cost with a 10% surcharge.

The SEP program is expected to "break-even" on an annual basis. This means that the revenue raised is expected to be approximately the same as if the power had been sold on the opportunity export market.

Under SEP, participating large Manitoba customers either accept or decline the available additional electricity, as offered at the rates approved by the Board. In accepting the excess power, customers accept the risk of adverse implications if a service interruption occurs. These customers are generally expected to have back-up generation to draw on if a service interruption occurs.

Board Findings

MH's latest SEP application is in accordance with the Board approved methodology and the SEP program continues to have value for a small component of MH's larger customer base (those firms able to profitably access interruptible power).

Continuing to deal with SEP applications on an interim *ex parte* basis is consistent with past practice, and the rates set through this process are interim, to be finalized at General Rate Application hearings.

Accordingly, the Board affirms revised Schedule SEP-1 and will approve the attached schedule.

IT IS THEREFORE ORDERED THAT:

1. Manitoba Hydro's application for approval of Surplus Energy Rates from July 14 to July 20, 2014 as shown in Schedule SEP-1, as attached BE AND IS HEREBY APPROVED on an Interim Ex Parte basis.
2. This Interim Ex Parte Order shall be in full force and effect until confirmed or varied by a further Order of the Board following a public hearing.

THE PUBLIC UTILITIES BOARD

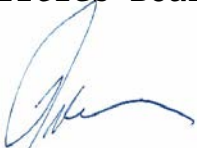
"Régis Gosselin, B ès Arts, MBA, CGA"

Chair

"Kurt Simonsen, P.Eng"

Acting Secretary

Certified a true copy of Order No.
77/14 issued by the Public
Utilities Board



Acting Secretary

The estimated average spot market rate is \$23.64 per MWh. Manitoba Hydro warrants that the Spot Market Rate has been calculated using approved Public Utilities Board methodology. The expected source(s) of spot market energy is (are): import and export

SCHEDULE SEP-1
SURPLUS ENERGY PROGRAM RATES

July 14, 2014 to July 20, 2014

Tariff No. 50-19 General Service Medium (Utility Owned Trans.)

| | Peak Hours | Shoulder Hours | Off Peak Hours | |
|---------------------|------------|----------------|----------------|-----------|
| Distribution Charge | 0.620 | 0.620 | 0.620 | cents/kWh |
| Energy Charge | 4.240 | 2.851 | 0.783 | cents/kWh |

Tariff No. 50-20 General Service Large 750V not exceeding 30 kV

| | Peak Hours | Shoulder Hours | Off Peak Hours | |
|---------------------|------------|----------------|----------------|-----------|
| Distribution Charge | 0.330 | 0.330 | 0.330 | cents/kWh |
| Energy Charge | 4.184 | 2.813 | 0.772 | cents/kWh |

Tariff No. 50-21 General Service Large 30 kV not exceeding 100 kV

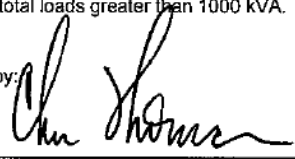
| | Peak Hours | Shoulder Hours | Off Peak Hours | |
|---------------------|------------|----------------|----------------|-----------|
| Distribution Charge | 0.140 | 0.140 | 0.140 | cents/kWh |
| Energy Charge | 4.083 | 2.745 | 0.754 | cents/kWh |

Tariff No. 50-22 General Service Large exceeding 100 kV

| | Peak Hours | Shoulder Hours | Off Peak Hours | |
|---------------------|------------|----------------|----------------|-----------|
| Distribution Charge | 0.060 | 0.060 | 0.060 | cents/kWh |
| Energy Charge | 4.023 | 2.705 | 0.743 | cents/kWh |

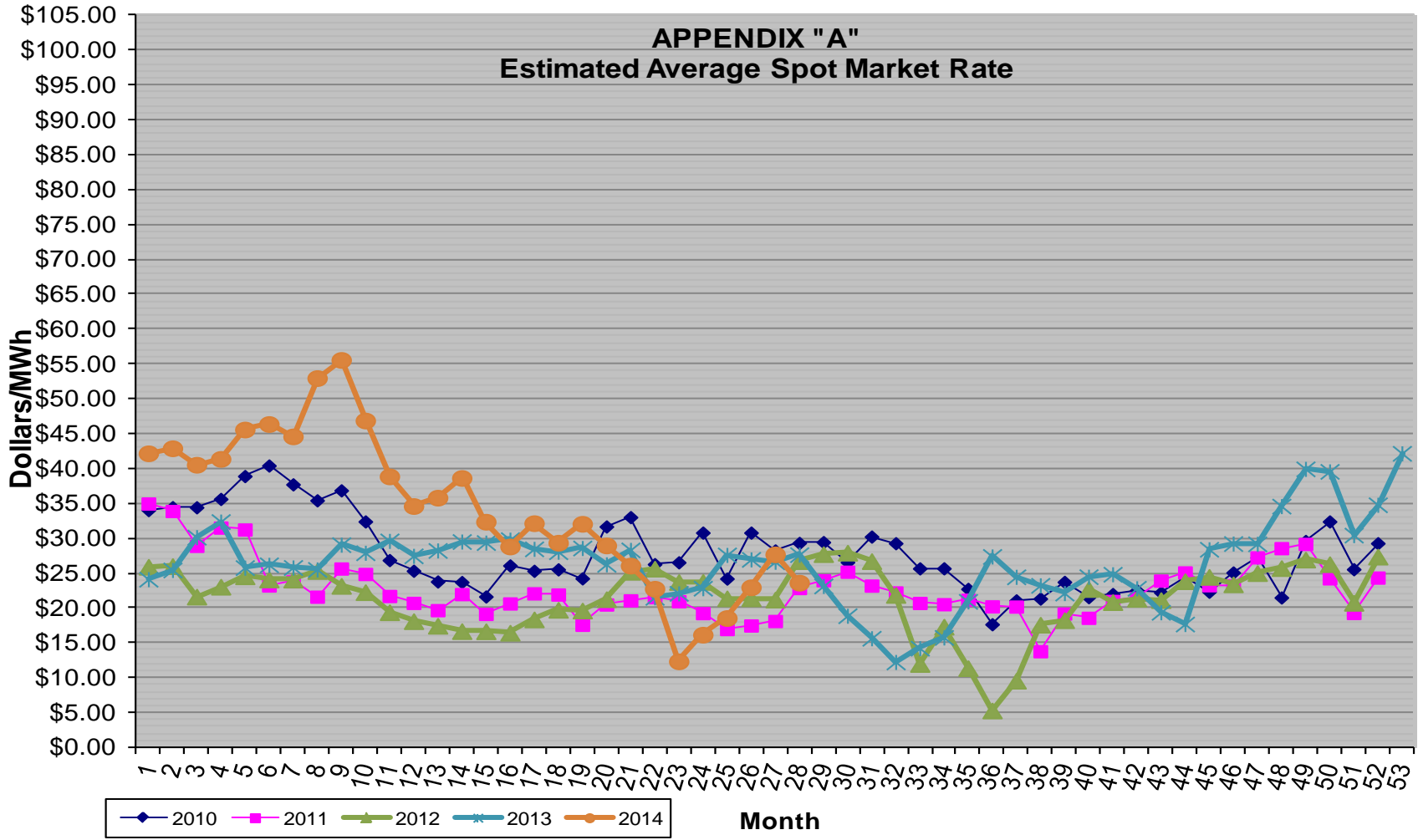
| | May 1 to October 31 | November 1 to April 30 |
|--------------------------------|--|---|
| Peak Hours | Monday - Friday * 12:01 - 20:00 Hours | Monday - Friday * 7:01-11:00 and 16:01-20:00 Hours |
| Shoulder Hours | Monday - Sunday ** 7:01 - 23:00 Hours | Monday - Sunday ** 7:01 - 23:00 |
| Off Peak Hours | Monday - Sunday 23:01 - 7:00 Hours | Monday - Sunday 23:01 - 7:00 Hours |
| * excluding statutory holidays | | |
| ** excluding peak hours | | |

The Basic Monthly Charge is \$50.00 per month for SEP customers with total loads less than or equal to 1000 kVA.
 The Basic Monthly Charge is \$100.00 per month for SEP customers with total loads greater than 1000 kVA.

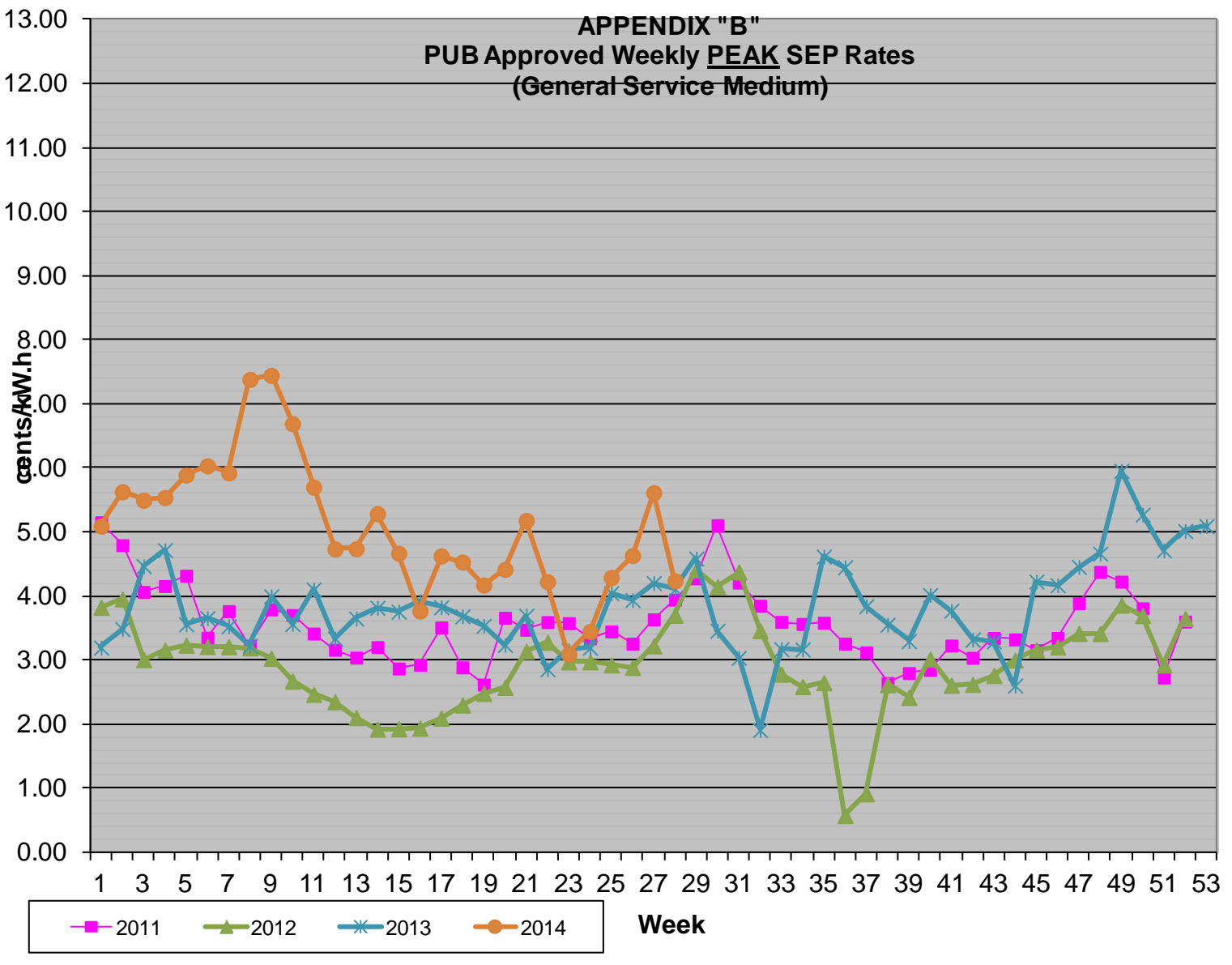
Approved by: 

Greg Barnlund
 Division Manager
 Rates & Regulatory Affairs

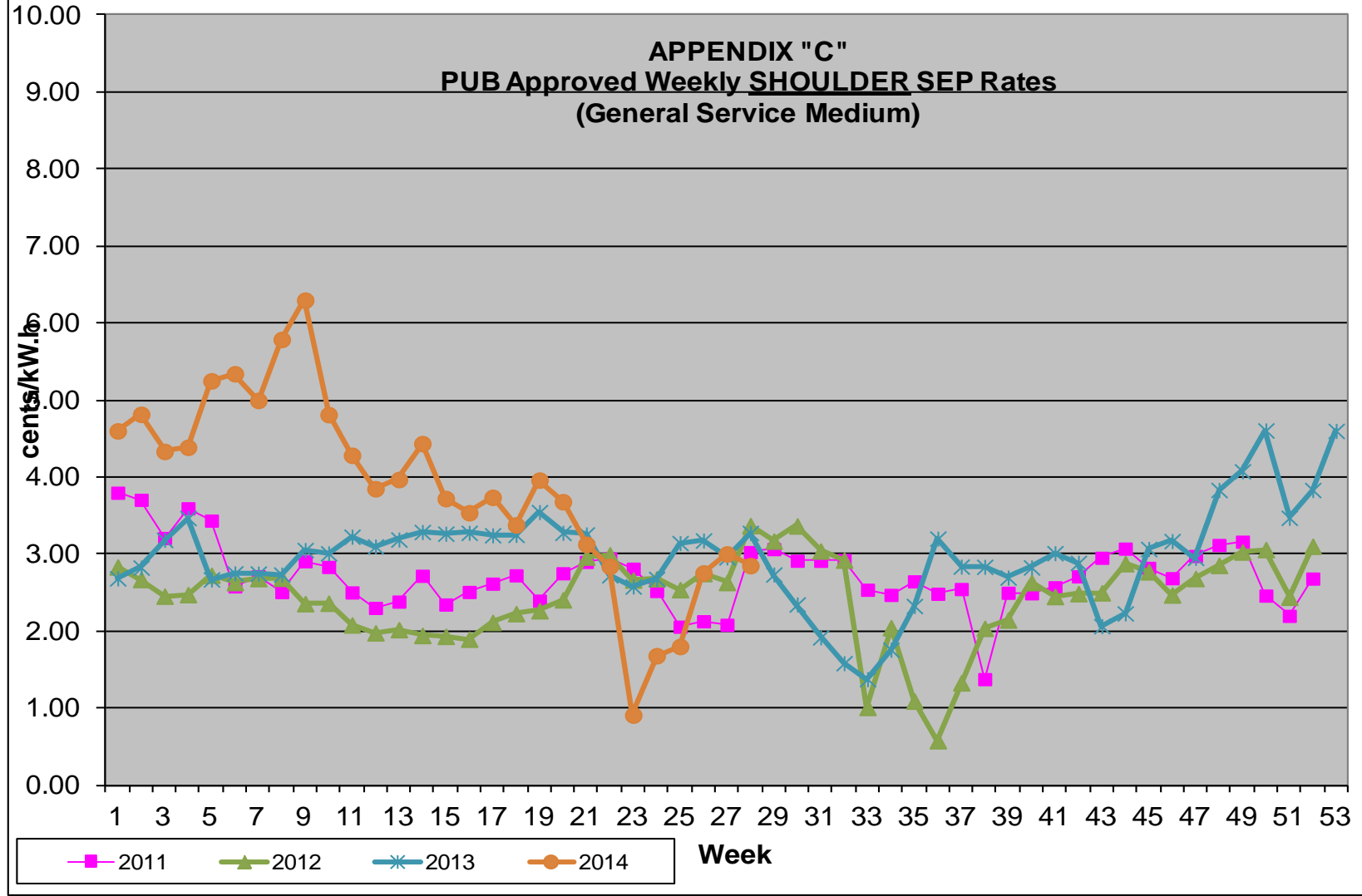
APPENDIX "A"
Estimated Average Spot Market Rate



APPENDIX "B"
PUB Approved Weekly PEAK SEP Rates
(General Service Medium)



APPENDIX "C"
PUB Approved Weekly SHOULDER SEP Rates
(General Service Medium)



APPENDIX "D"
PUB Approved Weekly OFF-PEAK SEP Rates
(General Service Medium)

